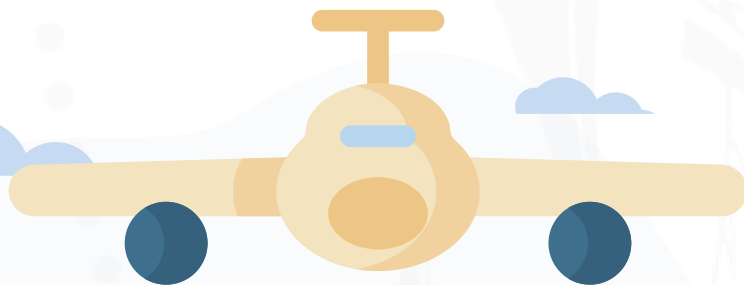




***\*Updated 13 October 2020***

# COVID-19 TRAVEL GUIDELINES



## DOMESTIC AND INTERNATIONAL TRAVEL

### Travel Health Visa

A travel health visa is required for every person traveling into and within The Bahamas. To apply visit [www.travel.gov.bs](http://www.travel.gov.bs)

Applicants are required to, prior to arrival in The Bahamas or embarking on inter-island travel:

- (a) Undergo a RTPCR COVID-19 molecular diagnostic test administered by an accredited lab; and
- (b) If the result is negative, submit the results of the test and contact information to the Chief Medical Officer at the Ministry of Health.

A person 10 years old or younger is not required to undergo a RTPCR COVID-19 molecular diagnostic test in order to obtain a travel health visa.

The results of a RTPCR COVID-19 molecular diagnostic test is valid for a period of five days from the date on which the test was taken, and results are only valid for that time.

### Inter-island travel

A Travel Health Visa is required for all inter-island travelers. Result must be presented to the carrier agent at the point of embarkation.

A person traveling from **New Providence** shall:

- (a) Undergo a RTPCR COVID-19 molecular diagnostic test and obtain a negative result prior to applying for the travel health visa; and
- (b) Upon arrival on the other island, submit to mandatory quarantine at a government identified facility or any other appropriate facility as determined by the Ministry of Health, at the traveler's expense, for 14 days or for the duration of stay if for a lesser period.

A person traveling from **Abaco to Elbow Cay, Grand Cay, Green Turtle Cay or Man-O-War Cay** shall, upon arrival in one of the cays, submit to mandatory quarantine at a government identified facility or any other appropriate facility as determined by the Ministry of Health, at their own expense for a period of 14 days.

A RTPCR COVID-19 test and Health Visa are not required for a person traveling inter-island:

- (a) In respect of an emergency, evidenced by written confirmation from a health officer or the Royal Bahamas Police Force stating that the person has an emergency that requires inter-island travel; or
- (b) As the employee of an operator of an aircraft or a vessel transporting freight and passengers.

A person traveling from an island listed in the **First Schedule\*** or **Second Schedule\*** is not required to obtain a COVID-19 RTPCR test result prior to travel to New Providence; however, a traveler is required to obtain a negative result when departing from New Providence to return to a Family Island.

A hotel is an appropriate facility for quarantine.

All inter-island travelers are required to wear a face mask.

### **Restriction of travelers from island under lockdown**

Travel is not permitted from an island for which notice has been given of an impending lockdown order or for which additional measures and restrictions have been imposed.

### **Entry requirements for citizens, legal residents and visitors**

1. Travel Health Visa issued by the government.
2. Comply with all other legal requirements.

### **Quarantine**

A person arriving in The Bahamas shall –

- (a) Submit to mandatory quarantine at a government identified facility or any other appropriate facility as determined by the Ministry of Health, at their own expense, for 14 days or for the duration of stay, if for a lesser period.
- (b) Undergo a RTPCR CCOVID-19 molecular diagnostic test at the end of the quarantine period.

A visitor under quarantine may travel outside the jurisdiction subject to protocols established by the Ministry of Health.

A hotel is an appropriate facility for quarantine.

### **Condition of entry – Monitoring**

As a condition of entry into The Bahamas, a traveler agrees to monitoring via the HubbCat Monitoring Platform by the Ministry of Health, members of the COVID-19 Enforcement Unit and unscheduled visits by the Royal Bahamas Police Force.

A citizen or legal resident who refuses to be monitored will be required to submit to mandatory quarantine, at their own expense, at a government identified facility as appointed by the Competent Authority.

A visitor who refuses to be monitored will be deported at the earliest opportunity and be placed in mandatory quarantine facility until deportation.

## Travel by sea

Every port of entry in every Family Island will be closed with the exception of any port of entry which is a public dock.

A person entering The Bahamas by sea must:

- a. Obtain a Travel Health Visa and comply with all other legal requirements, and submit prior to arrival, a valid negative RTPCR COVID-19 molecular diagnostic test.
- b. Stop at the port of entry at the intended destination and delivery to the local authority a copy of the negative RTPCR COVID-19 molecular diagnostic test and a valid travel health visa.
- c. Not travel to any other island before or during the commencement of quarantine.
- d. At their own expense, the traveler is required to quarantine on their vessel or other appropriate location for a period of 14 days or duration of stay if less than 14 days and undergo a RTPCR COVID-19 molecular diagnostic test at the end of the quarantine period.

***\*First Schedule of Islands:*** Acklins, Andros, Berry Islands, Bimini, Cat Island, Chub Cay, Crooked Island, Elbow Cay, Eleuthera, Exuma, Inagua, Mayaguana, Grand Bahama, Grand Cay, Green Turtle Cay, Harbour Island, Long Cay, Long Island, Man-O-War Cay, Ragged Island, Rum Cay, San Salvador and Spanish Wells.

***\*Second Schedule of Islands:*** New Providence (including Rose Island) and Paradise Island and Abaco.

**13 October 2020**



**Emergency Powers (COVID-19 Pandemic) (No. 8) Order, 2020**